



vibrant  
blue oils

Sovereign Tea™

— BRAIN BALANCE —



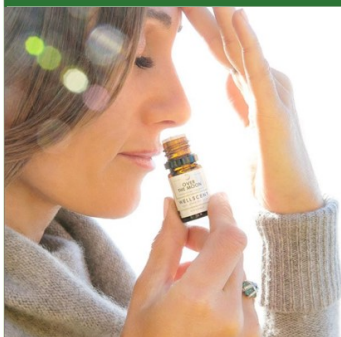
**BENEFITS:** Formulated to support healthy immune barrier function and give you power and control over your health. Sovereign Tea helps you support your health sovereignty when exposed to viruses and viral shedding.

**INDICATIONS:**

Use to support respiratory health and inhibit symptoms of coagulation, such as nose bleeds, blood clots, heart inflammation and unusually heavy menstrual cycles that may reduce platelet aggregation in the blood and have been associated with exposure to viral shedding.

Pine needle tea is one of the most potent anti-oxidants there is and it's known to calm inflammation, stress and depression, pain and respiratory infections. Pine tea also kills parasites.

## Application



**HOW TO USE:** Designed for aromatic and internal use. We recommend adding 1- 2 drops of the blend to 1/3 c. hot water, pause to inhale the steam and aroma. Slowly drink the Sovereign Tea. For Aromatic Usage, hold the bottle under nose for 3 or 4 breaths.

**WHEN TO USE:** Use daily, up to 3 times daily to support immune health and lung barrier function.

**INGREDIENTS:** Vibrant Blue Oils Brain Balance Sovereign Tea blend contains a proprietary formulation of organic and/or wild crafted essential oils of Ingredients: Pine Needles, Douglas Fir, Cedarwood, Frankincense, Myrrh, Neroli and Pink Grapefruit in a base of fractionated coconut oil.

**PRODUCT TIPS:**

- Inhale deeply from the bottle or steam from hot water.
- Ingest daily as a preventative measure or more regularly when exposed to a viral threat or viral shedding.



Proprietary brain balance blends are formulated to support optimal function of the brain to ensure that key hormonal and nervous system signals are sent and received.